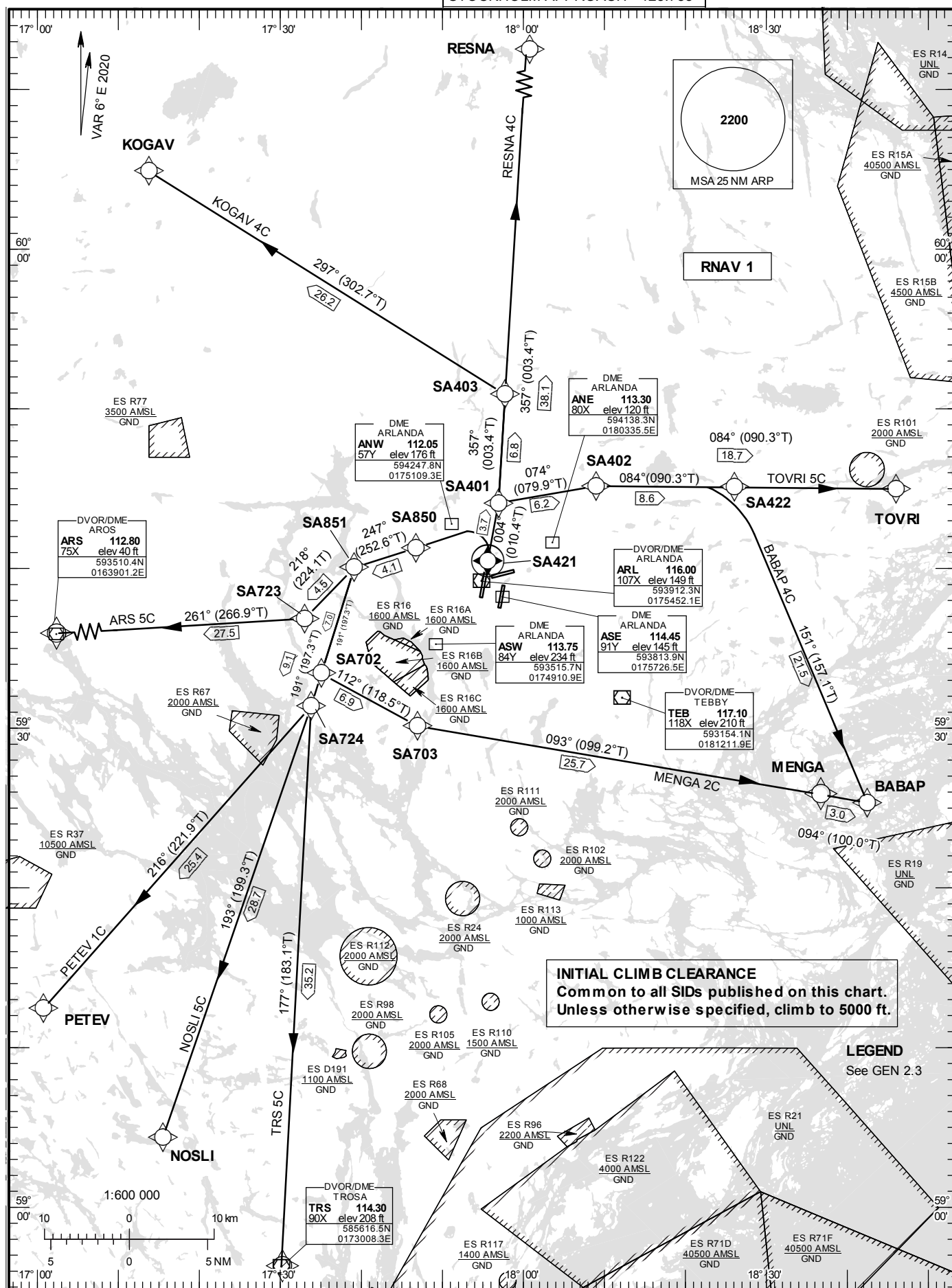


**STANDARD INSTRUMENT
DEPARTURE CHART (SID) -
ICAO**

HGT and ALT in ft
BRG are MAG (True)
TA 5000 ft AMSL

ARLANDA TOWER	118.505
ARLANDA ATIS DEP	121.630
STOCKHOLM APPROACH	123.755

**RNAV (DME/DME or GNSS)
SID RWY 01L**



STOCKHOLM/Arlanda

Prescribed Coding of RNAV SID for RWY 01L

REMARK

INITIAL CLIMB CLEARANCE: Climb to 5000 ft unless otherwise specified. Common to all SIDs published on charts.

Aircraft proceeding on RNAV SID shall use 400 ft per NM (6.6%) as a minimum gradient of climb up to 5000 ft AMSL. Aircraft unable to conform with this procedure shall inform ATS accordingly.

Aircraft from STOCKHOLM/Arlanda shall not be operated at an airspeed of more than 250 kt IAS below FL100 unless otherwise instructed.

Contact Frequency: Contact STOCKHOLM DEPARTURE, when so instructed by TWR, on channel indicated below

ARS 5C

Path Term	Waypoint Identifier	Fly-over	Course °M(°T)	Dist (NM)	Turn Dir	Rest Alts (ft AMSL)	Speed Limits (kt)	VPA/ RDH (°/ft)	Rec Navaid	Navigation Specification
CF	SA421	Y	004°(010.4°)	0.5	-	+600	-	-	ARL	RNAV 1
DF	SA850	-	-	-	L	+1500	-205	-	-	RNAV 1
TF	SA851	-	247°(252.6°)	4.1	-	-	-	-	-	RNAV 1
TF	SA723	-	218°(224.1°)	4.5	-	-	-	-	-	RNAV 1
TF	ARS	-	261°(266.9°)	27.5	-	-	-	-	-	RNAV 1

SID instruction:

Climb on track 004° to SA421 (MNM 600 ft before turn) – SA850 (max IAS 205 kt until SA850) – SA851 – SA723 – ARS

124.105 MHz

ACFT unable to follow RNAV SID:

Report "unable RNAV SID due to RNAV type" to Clearance Delivery and "unable RNAV SID" to Stockholm Departure at first contact.
Climb on track 004° to ARL DME 1.3 (MNM 600 ft before turn). Turn left to track 248° (max IAS 205 kt until established on track 248°). Expect radar vectors to ARS.

BABAP 4C

Path Term	Waypoint Identifier	Fly-over	Course °M(°T)	Dist (NM)	Turn Dir	Rest Alts (ft AMSL)	Speed Limits (kt)	VPA/ RDH (°/ft)	Rec Navaid	Navigation Specification
CF	SA421	Y	004°(010.4°)	0.5	-	+530	-	-	ARL	RNAV 1
TF	SA401	-	004°(010.4°)	3.7	-	+2500	-205	-	-	RNAV 1
TF	SA402	-	074°(079.9°)	6.2	R	-	-	-	-	RNAV 1
TF	SA422	-	084°(090.3°)	8.6	-	-	-	-	-	RNAV 1
TF	BABAP	-	151°(157.1°)	21.5	R	-	-	-	-	RNAV 1

SID instruction:

Climb on track 004° to SA421 – SA401 (MNM 2500 ft and max IAS 205 kt until SA401) – SA402 – SA422 – BABAP

130.330 MHz

MNM climb gradient 9.3%(570 ft/NM) until SA401
Note: If unable 2500 ft before first turn, continue on track 004° and inform ATC.

ACFT unable to follow RNAV SID:

Report "unable RNAV SID due to RNAV type" to Clearance Delivery and "unable RNAV SID" to Stockholm Departure at first contact.
Climb on track 004° to ARL DME 4.0 or 2500 ft, whichever is later. Turn right to track 074° (max IAS 205 kt until established on 074°). Expect radar vectors to BABAP.

STOCKHOLM/Arlanda**KOGAV 4C**

Path Term	Waypoint Identifier	Fly-over	Course °M(°T)	Dist (NM)	Turn Dir	Rest Alts (ft AMSL)	Speed Limits (kt)	VPA/ RDH (°/ft)	Rec Navaid	Navigation Specification
CF	SA421	Y	004°(010.4°)	0.5	-	+530	-	-	ARL	RNAV 1
TF	SA401	-	004°(010.4°)	3.7	-	-	-	-	-	RNAV 1
TF	SA403	-	357°(003.4°)	6.8	-	-	-	-	-	RNAV 1
TF	KOGAV	-	297°(302.7°)	26.2	L	-	-	-	-	RNAV 1

SID instruction: Climb on track 004° to SA421 – SA401 – SA403 – KOGAV**124.105 MHz**

ACFT unable to follow RNAV SID: Report "unable RNAV SID due RNAV type" to Clearance Delivery and "unable RNAV SID" to Stockholm Departure at first contact.
Climb on track 004°. Expect radar vectors to KOGAV.

MENGA 2C

Path Term	Waypoint Identifier	Fly-over	Course °M(°T)	Dist (NM)	Turn Dir	Rest Alts (ft AMSL)	Speed Limits (kt)	VPA/ RDH (°/ft)	Rec Navaid	Navigation Specification
CF	SA421	Y	004°(010.4°)	0.5	-	+600	-	-	ARL	RNAV 1
DF	SA850	-	-	-	L	+1500	-205	-	-	RNAV 1
TF	SA851	-	247°(252.6°)	4.1	-	-	-	-	-	RNAV 1
TF	SA702	-	191°(197.3°)	7.0	L	-	-	-	-	RNAV 1
TF	SA703	-	112°(118.5°)	6.9	L	-	-	-	-	RNAV 1
TF	MENGA	-	093°(099.2°)	25.7	-	-	-	-	-	RNAV 1
TF	BABAP	-	094°(100.0°)	3.0	-	-	-	-	-	RNAV 1

SID instruction: Climb on track 004° to SA421 (MNM 600 ft before turn) – SA850 (max IAS 205 kt until SA850) – SA851 – SA702 – SA703 -MENGA – BABAP**124.105 MHz**

ACFT unable to follow RNAV SID: Report "unable RNAV SID due RNAV type" to Clearance Delivery and "unable RNAV SID" to Stockholm Departure at first contact.
Climb on track 004° to ARL DME 1.3 (MNM 600 ft before turn). Turn left to track 248° (max IAS 205 kt until established on track 248°). Expect radar vectors to BABAP

NOSLI 5C

Path Term	Waypoint Identifier	Fly-over	Course °M(°T)	Dist (NM)	Turn Dir	Rest Alts (ft AMSL)	Speed Limits (kt)	VPA/ RDH (°/ft)	Rec Navaid	Navigation Specification
CF	SA421	Y	004°(010.4°)	0.5	-	+600	-	-	ARL	RNAV 1
DF	SA850	-	-	-	L	+1500	-205	-	-	RNAV 1
TF	SA851	-	247°(252.6°)	4.1	-	-	-	-	-	RNAV 1
TF	SA724	-	191°(197.3°)	9.1	L	-	-	-	-	RNAV 1
TF	NOSLI	-	193°(199.3°)	28.7	-	-	-	-	-	RNAV 1

SID instruction: Climb on track 004° to SA421 (MNM 600 ft before turn) – SA850 (max IAS 205 kt until SA850) – SA851 – SA724 - NOSLI**124.105 MHz**

ACFT unable to follow RNAV SID: Report "unable RNAV SID due RNAV type" to Clearance Delivery and "unable RNAV SID" to Stockholm Departure at first contact.
Climb on track 004° to ARL DME 1.3 (MNM 600 ft before turn). Turn left to track 248° (max IAS 205 kt until established on track 248°). Expect radar vectors to NOSLI.

STOCKHOLM/Arlanda**PETEV 1C**

Path Term	Waypoint Identifier	Fly-over	Course °M(°T)	Dist (NM)	Turn Dir	Rest Alts (ft AMSL)	Speed Limits (kt)	VPA/ RDH (°/ft)	Rec Navaid	Navigation Specification
CF	SA421	Y	004°(010.4°)	0.5	-	+600	-	-	ARL	RNAV 1
DF	SA850	-	-	-	L	+1500	-205	-	-	RNAV 1
TF	SA851	-	247°(252.6°)	4.1	-	-	-	-	-	RNAV 1
TF	SA724	-	191°(197.3°)	9.1	L	-	-	-	-	RNAV 1
TF	PETEV	-	216°(221.9°)	25.4	-	-	-	-	-	RNAV 1

SID instruction: Climb on track 004° to SA421 (MNM 600 ft before turn) – SA850 (max IAS 205 kt until SA850) – SA851 – SA724 – PETEV **124.105 MHz**

ACFT unable to follow RNAV SID: Report "unable RNAV SID due to RNAV type" to Clearance Delivery and "unable RNAV SID" to Stockholm Departure at first contact.
Climb on track 004° to ARL DME 1.3 (MNM 600 ft before turn). Turn left to track 248° (max IAS 205 kt until established on track 248°). Expect radar vectors to PETEV.

RESNA 4C

Path Term	Waypoint Identifier	Fly-over	Course °M(°T)	Dist (NM)	Turn Dir	Rest Alts (ft AMSL)	Speed Limits (kt)	VPA/ RDH (°/ft)	Rec Navaid	Navigation Specification
CF	SA421	Y	004°(010.4°)	0.5	-	+530	-	-	ARL	RNAV 1
TF	SA401	-	004°(010.4°)	3.7	-	-	-	-	-	RNAV 1
TF	RESNA	-	357°(003.4°)	38.1	-	-	-	-	-	RNAV 1

SID instruction: Climb on track 004° to SA421 – SA401 – RESNA **124.105 MHz**

ACFT unable to follow RNAV SID: Report "unable RNAV SID due to RNAV type" to Clearance Delivery and "unable RNAV SID" to Stockholm Departure at first contact.
Climb on track 004°. Expect radar vectors to RESNA.

TOVRI 5C

Path Term	Waypoint Identifier	Fly-over	Course °M(°T)	Dist (NM)	Turn Dir	Rest Alts (ft AMSL)	Speed Limits (kt)	VPA/ RDH (°/ft)	Rec Navaid	Navigation Specification
CF	SA421	Y	004°(010.4°)	0.5	-	+530	-	-	ARL	RNAV 1
TF	SA401	-	004°(010.4°)	3.7	-	+2500	-205	-	-	RNAV 1
TF	SA402	-	074°(079.9°)	6.2	R	-	-	-	-	RNAV 1
TF	TOVRI	-	084°(090.3°)	18.7	-	-	-	-	-	RNAV 1

SID instruction: Climb on track 004° to SA421 – SA401 (MNM 2500 ft and max IAS 205 kt until SA401) – SA402 – TOVRI **130.330 MHz**

MNM climb gradient 9.3%(570 ft/NM) until SA401
Note: If unable 2500 ft before first turn, continue on track 004° and inform ATC.

ACFT unable to follow RNAV SID: Report "unable RNAV SID due to RNAV type" to Clearance Delivery and "unable RNAV SID" to Stockholm Departure at first contact.
Climb on track 004° to ARL DME 4.0 or 2500 ft, whichever is later. Turn right to track 074° (max IAS 205 kt until established on 074°). Expect radar vectors to TOVRI.

TRS 5C

Path Term	Waypoint Identifier	Fly-over	Course °M(°T)	Dist (NM)	Turn Dir	Rest Alts (ft AMSL)	Speed Limits (kt)	VPA/ RDH (°/ft)	Rec Navaid	Navigation Specification
CF	SA421	Y	004°(010.4°)	0.5	-	+600	-	-	ARL	RNAV 1
DF	SA850	-	-	-	L	+1500	-205	-	-	RNAV 1
TF	SA851	-	247°(252.6°)	4.1	-	-	-	-	-	RNAV 1
TF	SA724	-	191°(197.3°)	9.1	L	-	-	-	-	RNAV 1
TF	TRS	-	177°(183.1°)	35.2	-	-	-	-	-	RNAV 1

SID instruction: Climb on track 004° to SA421 (MNM 600 ft before turn) – SA850 (max IAS 205 kt until SA850) – SA851 – SA724 – TRS **124.105 MHz**

ACFT unable to follow Report "unable RNAV SID due RNAV type" to Clearance Delivery and "unable RNAV SID" RNAV SID: to Stockholm Departure at first contact.
Climb on track 004° to ARL DME 1.3 (MNM 600 ft before turn). Turn left to track 248° (max IAS 205 kt until established on track 248°). Expect radar vectors to TRS.